

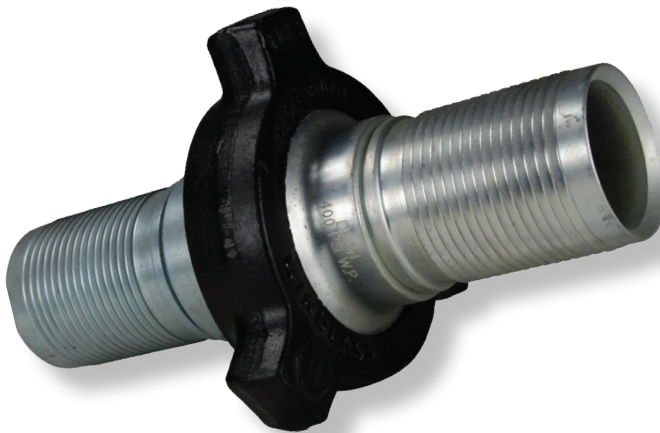


Boss™ LPS Low Pressure Systems

Frac Fittings



3" and 4"
HUM206400CS



complete assembly
HUMF100300CS

Application:

- specifically designed for the transfer of water, chemicals and sand slurry at hydraulic fracturing sites

Sizes:

- 2", 3", 4", 6" and 8"

Materials:

- male NPT fittings: machined iron
- 2", 3", 4" and 6" are schedule 80 pipe
- 8" is schedule 40 pipe
- stems: zinc plated
- nut: forged steel meeting AISI standards

Features:

- one-piece stem design eliminates the leak path common with two-piece threaded systems
- interchangeable with current fittings; phase them into your operation
- designed to work with Dixon® King Crimp™ sleeves or ferrules

Specifications:

- 2", 3" and 4" sizes: **400 PSI** working pressure at **70°F (21°C)**; 4:1 safety factor ¹
- 6" size: **230 PSI** working pressure at **70°F (21°C)** 4:1 safety factor
- 8" size: **150 PSI** working pressure at **70°F (21°C)** for 3:1 safety factor

Approval:

- frac fittings iron machined to ASTM standards
- forged nuts meet AISI standards

- ¹ **400 PSI** working pressure with a minimum 4:1 safety factor (*hose burst: hose working pressure*) is only achieved with:
- 2" and 3" sizes use standard crimp ferrules
 - 4" size requires heavy duty crimp ferrules, CF400-6CSHD through CF400-16CSHD, and heavy duty stems

Note: Water and petroleum transfer hoses rated from 100 to 300 PSI WP (4:1 safety factor) have excellent test results with the standard King Crimp™ ferrules CF400-xxCS.

Figure 206 Frac Fittings (316 stainless steel)



RHUM206100CS-1



RHUF206100CS

Application:

- used in the transfer of water, chemicals and sand slurry at hydraulic fracturing sites

Sizes:

- 1", 2" and 4"

Material:

- 316 stainless steel

Feature:

- one-piece stem design eliminates leak path experienced with two-piece threaded systems interchangeable with reliable brands

Specifications:

- 1" and 4" sizes: **400 PSI (28 BAR)** working pressure at **70°F (21°C)**; 4:1 safety factor (SF) ¹; female and male with King Crimp™ ferrules
- 2" size: **300 PSI (21 BAR)** working pressure at **70°F (21°C)**; 4:1 safety factor, female and male with King Crimp™ ferrules



¹ **400 PSI (28 BAR)** working pressure with a minimum 4:1 safety factor (hose burst: hose working pressure) is only achieved with: 4" size requires heavy duty (HD) crimp ferrules: CF400-6CSHD through CF400-16CSHD. Heavy duty SS are not available.

Suction Service Fittings



HUSF500SW



HUSM500SW-1



beveled end
STB50

Application:

- used in the transfer of dry cement, and in mud system suction lines

Size:

- 5"

Material:

- forged steel

Features:

- socket weld male and female unions can be attached to hose fittings or pipe
- weld ready hose fittings
- two-piece nut is pinned and bolted for easy service and repair

Specification:

- available configurations: socket weld x suction male hammer union, socket weld x suction female hammer union, King™ combination nipple, figure 50 suction hammer union split nut (includes bolts)

Approval:

- 2-piece nuts meet AISI standards

Dixon®

800 High Street • Chestertown, MD 21620
ph: 877.963.4966 • fx: 410-778-4702 • 800-283-4966
dixonvalve.com/bosslps

