



### HSG-Series Hygienic Sight Glasses



single pin clamp



bolted clamp

**Applications**

- Used widely in the food, dairy, and beverage sanitary processes to view products and fluids
- Can be used in industrial applications when you want to CIP and require 316L stainless steel construction

**Sizes**

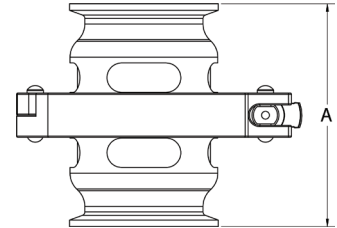
- 1/2" to 6"
  - single pin clamp: 1" to 6"; EPDM or FKM gasket
  - bolted clamp: 1/2" to 6"; PTFE gasket

**Features**

- 3A CIP certified
- Higher pressure range than other sight glasses
- Easy assembly and disassembly

**Materials**

- Body: 316L stainless steel
- Sight glass: polycarbonate
- Gaskets: PTFE, EPDM, or FKM
- Surface finish Ra  $\leq$ 32



Tube O.D.	A (in)	PSI @ 70°F (21°C)	PSI @ 200°F (94°C)	316L Stainless Steel EPDM Seal Part #	316L Stainless Steel FKM Seal Part #	316L Stainless Steel PTFE Seal Part #
1/2"	3.80	500	300	---	---	HSGP050CCA
3/4"	3.80	500	300	---	---	HSGP075CCA
1"	3.80	500	300	HSGE100CCA	HSGV100CCA	HSGP100CCA
1-1/2"	3.80	450	250	HSGE150CCA	HSGV150CCA	HSGP150CCA
2"	3.80	400	200	HSGE200CCA	HSGV200CCA	HSGP200CCA
2-1/2"	3.80	350	175	HSGE250CCA	HSGV250CCA	HSGP250CCA
3"	3.80	250	125	HSGE300CCA	HSGV300CCA	HSGP300CCA
4"	3.80	80	40	HSGE400CCA	HSGV400CCA	HSGP400CCA
6"	6.00	50	25	HSGE600CCA	HSGV600CCA	HSGP600CCA

**Seal Kits**

Tube O.D.	EPDM Seal Kit Part #	FKM Seal Kit Part #	PTFE Seal Kit Part #
1/2"	---	---	HSG-RKP050
3/4"	---	---	HSG-RKP075
1"	HSG-RKE100	HSG-RKV100	HSG-RKP100
1-1/2"	HSG-RKE150	HSG-RKV150	HSG-RKP150
2"	HSG-RKE200	HSG-RKV200	HSG-RKP200
2-1/2"	HSG-RKE250	HSG-RKV250	HSG-RKP250
3"	HSG-RKE300	HSG-RKV300	HSG-RKP300
4"	HSG-RKE400	HSG-RKV400	HSG-RKP400
6"	HSG-RKE600	HSG-RKV600	HSG-RKP600

**Replacement Polycarbonate Sight Inserts**

Tube O.D.	Polycarbonate Part #
1/2"	HSG-POLY-050
3/4"	HSG-POLY-075
1"	HSG-POLY-100
1-1/2"	HSG-POLY-150
2"	HSG-POLY-200
2-1/2"	HSG-POLY-250
3"	HSG-POLY-300
4"	HSG-POLY-400
6"	HSG-POLY-600

